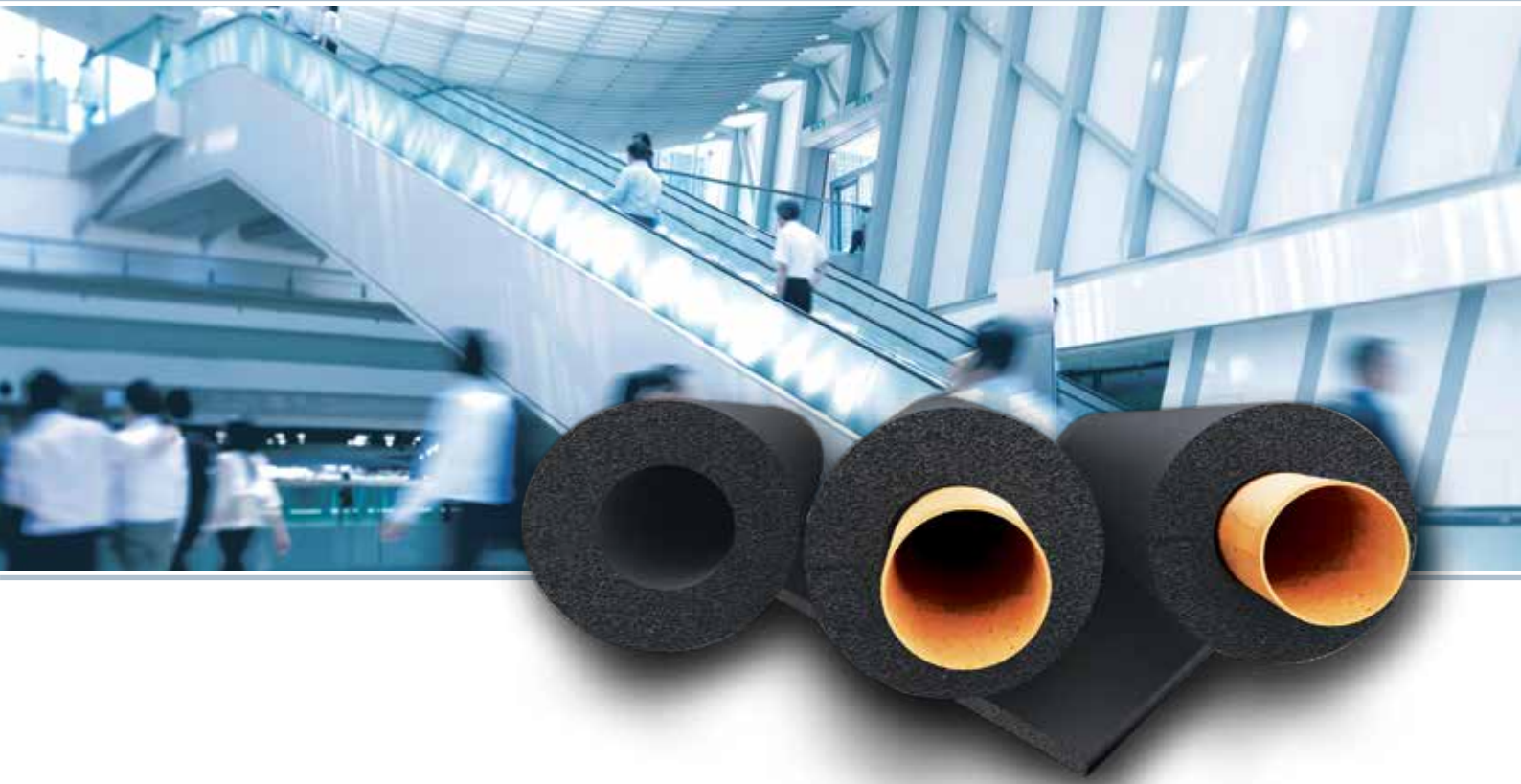


kaiflex[®] ST / kaiflex[®] ST plus



Excellent fire resistance and thermal efficiency

Kaiflex ST/STplus is a flexible, closed cell, elastomeric insulation material that reliably prevents condensation from forming and cuts energy losses. Euroclass B_s-s3, d0 in accordance with DIN EN 13501-1 guarantees a very high level of safety in case of a fire. Thanks to its sound-absorbing properties, dust and fibre free structure and antimicrobial characteristics, Kaiflex ST/STplus is especially suitable for use in public buildings.

Kaiflex STplus tubes are available in the handy length 1.20 m. The insulation material can thus be transported, stored and processed easily and efficiently.

- Class 0 Certified
- Euroclass B_s-s3, d0 in acc. with DIN EN 13501-1 for additional safety in a case of fire
- Reduces energy losses, $\lambda \leq 0.034 \text{ W/(m}\cdot\text{K)}$ at 0 °C
- In-built vapour barrier for long lasting protection against corrosion, $\mu \geq 10000$
- Inherent resistance to microbial growth, dust and fibre free
- Reliable long term performance
- Suitable for use in public buildings



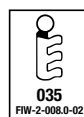
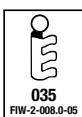
Kaiflex ST Technical Data

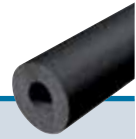
Material		Elastomeric foam based on synthetic rubber. Flexible Elastomeric Foam (FEF) in acc. to EN 14304	
Cell structure		Closed cell	
Colour		Black	
Upper temperature limit	Pipe Flat surfaces	+110 °C +85 °C	
Lower temperature limit		-50 °C (-200 °C)	See remark (1)
Thermal conductivity	λ_0 at -10 °C at 0 °C at +10 °C	$0.034 + 7.2 \cdot 10^{-5} \vartheta + 1.2 \cdot 10^{-6} \vartheta^2$ $\leq 0.033 \text{ W/(m·K)}$ $\leq 0.034 \text{ W/(m·K)}$ $\leq 0.035 \text{ W/(m·K)}$	Test acc. to DIN EN ISO 8497 DIN EN 12667
Water vapour permeability	Moisture resistance factor μ	≥ 10000 No separate vapour barrier required	Test acc. to DIN EN 13469 DIN EN 12086
EuroClass [◊]	Tubes Sheets	B _L -s3, d0 B-s3, d0	Test acc. to DIN EN 13501-1
Practical fire behaviour		Self-extinguishing, no drips, does not support flame spread	
Fire performance		Class 0	In acc. with UK building regulations
Surface spread of Flame		Class 1	Test acc. to BS 476-7
Fire propagation	Total index of performance Sub Index 1	<12 <6	Test acc. to BS 476-6
Corrosion resistance		Satisfies requirements	In acc. to DIN 1988
Insulation material index number acc. to AGI	Tubes Sheets	36.12.02.05.04 36.07.02.05.04	
Health aspects		Dust & fibre free Heavy metal (e.g. cadmium, lead) and formaldehyde free	
Resistance to	Mould and bacteria	no growth	In acc. with VDI 6022
Other attributes	pH-Value	CE marked Neutral	
Other certificates / approvals		FIW-audited (European Insulation Keymark Scheme for Thermal Insulation Products) UL-approved (UL94) FM-approved DNV, Lloyd's Register, See BG	Tubes: 035-FIW-2-008.0-05 Sheets: 035-FIW-2-008.0-02 In acc. with UL94 V-0, HF-1
Shelf life	Self-adhesive products	1 year	Store in a dry room at a typical relative humidity (between 50 % and 70 %) and room temperature (between 0 °C and +35 °C)
Tolerances		In acc. with DIN EN 14304:2013-04	
Outdoor applications		Needs protection against UV-radiation	See remark (2)

Remark (1) For temperatures below -50 °C please contact our Technical Support Team for advice.

Remark (2) To protect against UV-induced deterioration Kaiflex should be either painted using Kaifinish Color paint or covered with a suitable UV resistant cladding system within 1 day of being installed outdoors.

[◊] The Euroclass rating applies to metallic or solid mineral substrates.





Kaiflex ST Tube

Colour: Black · Length: 2 m

Copper pipe Cu			Iron & steel pipe Fe			6 mm Insulation thickness			9 mm Insulation thickness		
NB inch	Nom OD inch	Nom OD mm	NB inch	Nom OD mm	Min ID mm	Reference	Order No.	m/ carton	Reference	Order No.	m/ carton
	1/4	6.0			7.0	ST-06x006	4001188	600	ST-09x006	4001200	360
	3/8	10.0			11.0	ST-06x010	4001190	430	ST-09x010	4001202	320
3/8	1/2	12.0			13.0	ST-06x012	4001191	350	ST-09x012	4001203	280
1/2	5/8	15.0			16.0	ST-06x015	4001192	300	ST-09x015	4001204	240
5/8	3/4				21.0	ST-06x020	4001194	250	ST-09x020	4001206	160
3/4	7/8	22.0	1/2	21.3	23.0	ST-06x022	4001195	216	ST-09x022	4001207	156
1	1 1/8	28.0	3/4	26.9	29.0	ST-06x028	4001197 *	150	ST-09x028	4001209	124
1 1/4	1 3/8	35.0	1	33.7	36.0				ST-09x035	4001212	92
1 1/2	1 5/8	42.0	1 1/4	42.4	43.5				ST-09x042	4001214	70
			1 1/2	48.3	49.5				ST-09x048	4001216	60
2	2 1/8	54.0		54.0	55.0				ST-09x054	4001217	60
			2	60.3	61.5				ST-09x060	4001219	60

Copper pipe Cu			Iron & steel pipe Fe			13 mm Insulation thickness			19 mm Insulation thickness		
NB inch	Nom OD inch	Nom OD mm	NB inch	Nom OD mm	Min ID mm	Reference	Order No.	m/ carton	Reference	Order No.	m/ carton
	1/4	6.0			7.0	ST-13x006	4001232	240	ST-19x006	4001266	126
	3/8	10.0			11.0	ST-13x010	4001234	190	ST-19x010	4001267	106
3/8	1/2	12.0			13.0	ST-13x012	4001235	172	ST-19x012	4001268	100
1/2	5/8	15.0			16.0	ST-13x015	4001236	154	ST-19x015	4001269	86
5/8	3/4				21.0	ST-13x020	4001238	120	ST-19x020	4001271	76
3/4	7/8	22.0	1/2	21.3	23.0	ST-13x022	4001239	110	ST-19x022	4001272	74
1	1 1/8	28.0	3/4	26.9	29.0	ST-13x028	4001241	86	ST-19x028	4001274	58
1 1/4	1 3/8	35.0	1	33.7	36.0	ST-13x035	4001244	76	ST-19x035	4001277	48
1 1/2	1 5/8	42.0	1 1/4	42.4	43.5	ST-13x042	4001246	56	ST-19x042	4001279	40
			1 1/2	48.3	49.5	ST-13x048	4001248	48	ST-19x048	4001281	30
2	2 1/8	54.0		54.0	55.0	ST-13x054	4001249	46	ST-19x054	4001282	30
			2	60.3	61.5	ST-13x060	4001251	40	ST-19x060	4001284	28
2 1/2	2 5/8	67.0			68.5	ST-13x067	4001253	40	ST-19x067	4001286	28
2 13/16	3	76.1	2 1/2	76.1	77.0	ST-13x076	4001255	34	ST-19x076	4001288	28
3	3 1/8	80.0			81.0	ST-13x080	4001256 *	30	ST-19x080	4001289 *	26
			3	88.9	90.5	ST-13x089	4001257 *	30	ST-19x089	4001290 *	22
4	4 1/4	108.0			109.5	ST-13x108	4001259 *	28	ST-19x108	4001292 *	20
			4	114.3	116.0	ST-13x114	4001260 *	28	ST-19x114	4001293 *	18

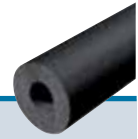
* No stock item, delivery time on request.

9 mm tubes are available upon request for the pipe dimensions: 9 x 64, 9 x 70, 9 x 76, 9 x 80, 9 x 89, 9 x 102, 9 x 108, 9 x 114, 9 x 125, 9 x 133, 9 x 140 and 9 x 160.

13 mm tubes are available upon request for the pipe dimensions: 13 x 125, 13 x 133, 13 x 140 and 13 x 160 mm.

19 mm tubes are available upon request for the pipe dimensions: 19 x 125, 19 x 133, 19 x 140 and 19 x 160 mm.

All tubes are available as slit items. For ordering slit items add "-SLIT" to the reference codes above (example: ST-13x076-SLIT).



Kaiflex ST Tube

Colour: Black · Length: 2 m

Copper pipe Cu			Iron & steel pipe Fe			25 mm Insulation thickness			32 mm Insulation thickness		
NB inch	Nom OD inch	Nom OD mm	NB inch	Nom OD mm	Min ID mm	Reference	Order No.	m/ carton	Reference	Order No.	m/ carton
3/8	1/2	12.0			13.0	ST-25x012	4001301	60	ST-32x012	4001346	36
1/2	5/8	15.0			16.0	ST-25x015	4001302	60	ST-32x015	4001347	32
5/8	3/4				21.0	ST-25x020	4001304	50			
3/4	7/8	22.0	1/2	21.3	23.0	ST-25x022	4001305	42	ST-32x022	4001349	32
1	1 1/8	28.0	3/4	26.9	29.0	ST-25x028	4001307	40	ST-32x028	4001351	24
1 1/4	1 3/8	35.0	1	33.7	36.0	ST-25x035	4001309	32	ST-32x035	4001352	24
1 1/2	1 5/8	42.0	1 1/4	42.4	43.5	ST-25x042	4001311	24	ST-32x042	4001353	22
			1 1/2	48.3	49.5	ST-25x048	4001312	24	ST-32x048	4001354	18
2	2 1/8	54.0		54.0	55.0	ST-25x054	4001313	22	ST-32x054	4001355	18
			2	60.3	61.5	ST-25x060	4001314	22	ST-32x060	4001357	16
2 1/2	2 5/8	67.0			68.5	ST-25x067	4001316	18	ST-32x067	4001359	14
2 13/16	3	76.1	2 1/2	76.1	77.0	ST-25x076	4001318	18	ST-32x076	4001361	12
			3	88.9	90.5	ST-25x089	4001320 *	14	ST-32x089	4001363	10
4	4 1/4	108.0			109.5	ST-25x108	4001322 *	10	ST-32x108	4001365	8
			4	114.3	116.0	ST-25x114	4001323 *	10	ST-32x114	4001366	8

Copper pipe Cu			Iron & steel pipe Fe			40 mm Insulation thickness			50 mm Insulation thickness		
NB inch	Nom OD inch	Nom OD mm	NB inch	Nom OD mm	Min ID mm	Reference	Order No.	m/ carton	Reference	Order No.	m/ carton
3/4	7/8	22.0	1/2	21.3	23.0	ST-40x022	4001373	22	ST-50x022	4001393 *	14
1	1 1/8	28.0	3/4	26.9	29.0	ST-40x028	4001375	16	ST-50x028	4001395 *	10
1 1/4	1 3/8	35.0	1	33.7	36.0	ST-40x035	4001376	16	ST-50x035	4001396 *	8
1 1/2	1 5/8	42.0	1 1/4	42.4	43.5	ST-40x042	4001377	16	ST-50x042	4001397 *	8
			1 1/2	48.3	49.5	ST-40x048	4001378	12	ST-50x048	4001398 *	8
2	2 1/8	54.0		54.0	55.0	ST-40x054	4001379	10	ST-50x054	4001399 *	8
			2	60.3	61.5	ST-40x060	4001380	10	ST-50x060	4001400 *	8
2 13/16	3	76.1	2 1/2	76.1	77.0	ST-40x076	4001382	10	ST-50x076	4001402 *	6
			3	88.9	90.5	ST-40x089	4001384	10	ST-50x089	4001403 *	6
			4	114.3	116.0	ST-40x114	4001387	6	ST-50x114	4001406 *	4

* No stock item, delivery time on request.

25 mm tubes are available upon request for the pipe dimensions: 25 x 140 mm.

32 mm tubes are available upon request for the pipe dimensions: 32 x 133, 32 x 140 and 32 x 160 mm.

40 and 50 mm tubes are available upon request for the pipe dimensions: 40 x 140, 40 x 160, 40 x 168, 50 x 140, 50 x 160 and 40 x 168 mm.

All tubes are available as slit items. For ordering slit items add "-SLIT" to the reference codes above (example: ST-13x076-SLIT).

Kaiflex ST SK Tube · self-adhesive · with tangential cut



Colour: Black · Length: 2 m

Copper pipe Cu			Iron & steel pipe Fe			9 mm Insulation thickness			13 mm Insulation thickness		
NB inch	Nom OD inch	Nom OD mm	NB inch	Nom OD mm	Min ID mm	Reference	Order No.	m/ carton	Reference	Order No.	m/ carton
1/2	5/8	15.0			16.0	ST-09x015-SK	4001649	240	ST-13x015-SK	4001661	154
3/4	7/8	22.0	1/2	21.3	23.0	ST-09x022-SK	4001651	156	ST-13x022-SK	4001663	110
1	1 1/8	28.0	3/4	26.9	29.0	ST-09x028-SK	4001652	124	ST-13x028-SK	4001664	86
1 1/4	1 3/8	35.0	1	33.7	36.0	ST-09x035-SK	4001653	92	ST-13x035-SK	4001665	76
1 1/2	1 5/8	42.0	1 1/4	42.4	43.5	ST-09x042-SK	4001654	70	ST-13x042-SK	4001666	56
			1 1/2	48.3	49.5	ST-09x048-SK	4001655	60	ST-13x048-SK	4001667	48
2	2 1/8	54.0		54.0	55.0	ST-09x054-SK	4001656	60	ST-13x054-SK	4001668	46
			2	60.3	61.5	ST-09x060-SK	4001657	60	ST-13x060-SK	4001669	40
2 1/2	2 5/8	67.0			68.5						
2 13/16	3	76.1	2 1/2	76.1	77.0				ST-13x076-SK	4001671	34
			3	88.9	90.5				ST-13x089-SK	4001673	30

Copper pipe Cu			Iron & steel pipe Fe			19 mm Insulation thickness			25 mm Insulation thickness		
NB inch	Nom OD inch	Nom OD mm	NB inch	Nom OD mm	Min ID mm	Reference	Order No.	m/ carton	Reference	Order No.	m/ carton
1/2	5/8	15.0			16.0	ST-19x015-SK	4001674	86	ST-25x015-SK	4001687 *	60
3/4	7/8	22.0	1/2	21.3	23.0	ST-19x022-SK	4001676	74	ST-25x022-SK	4001688 *	42
1	1 1/8	28.0	3/4	26.9	29.0	ST-19x028-SK	4001677	58	ST-25x028-SK	4001689 *	40
1 1/4	1 3/8	35.0	1	33.7	36.0	ST-19x035-SK	4001678	48	ST-25x035-SK	4001690 *	32
1 1/2	1 5/8	42.0	1 1/4	42.4	43.5	ST-19x042-SK	4001679	40	ST-25x042-SK	4001691 *	24
			1 1/2	48.3	49.5	ST-19x048-SK	4001680	30	ST-25x048-SK	4001692 *	24
2	2 1/8	54.0		54.0	55.0	ST-19x054-SK	4001681	30	ST-25x054-SK	4001693 *	22
			2	60.3	61.5	ST-19x060-SK	4001682	28	ST-25x060-SK	4001694 *	22
2 1/2	2 5/8	67.0			68.5	ST-19x067-SK	4001684	28	ST-25x067-SK	4007422 *	18
2 13/16	3	76.1	2 1/2	76.1	77.0	ST-19x076-SK	4001685	28	ST-25x076-SK	4001695 *	18
			3	88.9	90.5	ST-19x089-SK	4001686	22	ST-25x089-SK	4001696 *	14

* No stock item, delivery time on request.

32 mm tubes are available upon request.

Kaiflex ST Tube · endless · pre-chalked · coils in square box



Colour: Black

Copper pipe Cu			Iron & steel pipe Fe			9 mm Insulation thickness			13 mm Insulation thickness		
NB inch	Nom OD inch	Nom OD mm	NB inch	Nom OD mm	Min ID mm	Reference	Order No.	m/ carton	Reference	Order No.	m/ carton
	1/4	6.0			7.0	ST-09x006-E	4005707	40	ST-13x006-E	4009264	26
	3/8	10.0			11.0	ST-09x010-E	4009258	34	ST-13x010-E	4005711	23
3/8	1/2	12.0			13.0	ST-09x012-E	4009259	31	ST-13x012-E	4009265	18
1/2	5/8	15.0			16.0	ST-09x015-E	4009260	27	ST-13x015-E	4006627	17
5/8	3/4				21.0	ST-09x020-E	4006623	23	ST-13x020-E	4005712	15
3/4	7/8	22.0	1/2	21.3	23.0	ST-09x022-E	4009261	19	ST-13x022-E	4006628	14
1	1 1/8	28.0	3/4	26.9	29.0	ST-09x028-E	4009262	14	ST-13x028-E	4005713	10

Kaiflex ST Tube · endless · pre-chalked · individually packaged in plastic bags



Colour: Black · Length: 15 m

Copper pipe Cu			Iron & steel pipe Fe			9 mm Insulation thickness				13 mm Insulation thickness			
NB inch	Nom OD inch	Nom OD mm	NB inch	Nom OD mm	Min ID mm	Reference	Order No.	coils/ carton	m/ carton	Reference	Order No.	coils/ carton	m/ carton
	1/4	6.0			7.0	ST-09x006-E15	4001629	20	300	ST-13x006-E15	4001636	13	195
	3/8	10.0			11.0	ST-09x010-E15	4001630	15	225	ST-13x010-E15	4001637	10	150
3/8	1/2	12.0			13.0	ST-09x012-E15	4001631	14	210	ST-13x012-E15	4001638	9	135
1/2	5/8	15.0			16.0	ST-09x015-E15	4001632	13	195	ST-13x015-E15	4001639	8	120
5/8	3/4				21.0	ST-09x020-E15	4001633	12	180	ST-13x020-E15	4001640	7	105
3/4	7/8	22.0	1/2	21.3	23.0	ST-09x022-E15	4001634	9	135	ST-13x022-E15	4001641	6	90
1	1 1/8	28.0	3/4	26.9	29.0	ST-09x028-E15	4001635	8	120	ST-13x028-E15	4001642	6	90

Kaiflex ST Sheet · continuous

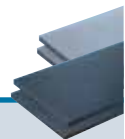


Colour: Black

Insulation thickness mm	Sheet · continuous 1 m width · OD coil: 40 cm · in carton			Sheet · continuous · self-adhesive 1 m width · OD coil: 40 cm · in carton		
	Reference	Order No.	m ² /carton	Reference	Order No.	m ² /carton
6	ST-06-RL-S	4012754	18	ST-06-RL-SK-S	4012757	18
10	ST-10-RL-S	4001584	10	ST-10-RL-SK-S	4001588	10
13	ST-13-RL-S	4001585	8	ST-13-RL-SK-S	4001589	8
19	ST-19-RL-S	4001586	6	ST-19-RL-SK-S	4001590	6
25	ST-25-RL-S	4012756	4	ST-25-RL-SK-S	4012759	4
32	ST-32-RL-S	4001587	3	ST-32-RL-SK-S	4012760	3

Insulation thickness mm	Sheet · continuous 1 m width · OD coil: 53 cm · in carton			Sheet · continuous · self-adhesive 1 m width · OD coil: 53 cm · in carton		
	Reference	Order No.	m ² /carton	Reference	Order No.	m ² /carton
6	ST-06-RL-XL	4001537	30	ST-06-RL-SK-XL	4001563	30
10	ST-10-RL-XL	4001539	20	ST-10-RL-SK-XL	4001564	20
13	ST-13-RL-XL	4001540	14	ST-13-RL-SK-XL	4001565	14
19	ST-19-RL-XL	4001542	10	ST-19-RL-SK-XL	4001567	10
25	ST-25-RL-XL	4001543	8	ST-25-RL-SK-XL	4001568	8
32	ST-32-RL-XL	4001544	6	ST-32-RL-SK-XL	4001569	6
40	ST-40-RL-XL	4012596	5.5	ST-40-RL-SK-XL	4012597	5.5
50	ST-50-RL-XL	4012226	4	ST-50-RL-SK-XL	4012594	4

Kaiflex ST Sheet · flat



Colour: Black

Insulation thickness mm	Sheet · flat 2.0 x 1.0 m			Sheet · flat 2.0 x 1.0 m		
	Reference	Order No.	m ² /carton	Reference	Order No.	m ² /carton
50	ST-50-PL10	4001561	6	ST-50-PL10-SK	4001583	6

Kaiflex ST_{plus} Technical Data

Material		Elastomeric foam based on synthetic rubber. Flexible Elastomeric Foam (FEF) in acc. to EN 14304	
Cell structure		Closed cell	
Colour		Black	
Upper temperature limit	Pipe	+110 °C	
Lower temperature limit		-50 °C (-200 °C)	See remark (1)
Thermal conductivity	λ_{θ} at -10 °C at 0 °C at +10 °C	$0.034 + 7.2 \cdot 10^{-5} \theta + 1.2 \cdot 10^{-6} \theta^2$ $\leq 0.033 \text{ W/(m}\cdot\text{K)}$ $\leq 0.034 \text{ W/(m}\cdot\text{K)}$ $\leq 0.035 \text{ W/(m}\cdot\text{K)}$	Test acc. to DIN EN 12667
Water vapour permeability	Moisture resistance factor μ	≥ 10000 No separate vapour barrier required	Test acc. to DIN EN 13469
Euroclass[°]		B _L -s3, d0	Test acc. to DIN EN 13501-1
Practical fire behaviour		Self-extinguishing, no drips, does not support flame spread	
Fire performance		Class 0	In acc. with UK building regulations
Corrosion resistance		Satisfies requirements	In acc. with DIN 1988
Health aspects		Dust & fibre free Heavy metal (e.g. cadmium, lead) and Formaldehyde free	
Other attributes	pH-Value	CE marked Neutral	
Other certificates / approvals		FM-approved	
Shelf life	Self-adhesive products	1 year	Store in a dry room at a typical relative humidity (between 50 % and 70 %) and room temperature (between 0 °C and +35 °C)
Tolerances		In acc. with DIN EN 14304:2013-04	
Outdoor applications		Needs protection against UV-radiation	See remark (2)

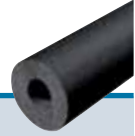
Remark (1) For temperatures below -50 °C please contact our Technical Support Team for advice.

Remark (2) To protect against UV-induced deterioration Kaiflex should be either painted using Kaifinish Color paint or covered with a suitable UV resistant cladding system within 1 day of being installed outdoors.

[°] The Euroclass rating applies to metallic or solid mineral substrates.



Kaiflex STplus Tube



Colour: Black · Length: 1.2 m

Copper pipe Cu			Iron & steel pipe Fe			9 mm Insulation thickness			13 mm Insulation thickness		
NB inch	Nom OD inch	Nom OD mm	NB inch	Nom OD mm	Min ID mm	Reference	Order No.	m/ carton	Reference	Order No.	m/ carton
1/2	5/8	15.0			16.0	STp-09x015-1,2	4002892	158.4	STp-13x015-1,2	4002913 *	108.0
3/4	7/8	22.0	1/2	21.3	23.0	STp-09x022-1,2	4002894	112.8	STp-13x022-1,2	4002915 *	80.4
1	1 1/8	28.0	3/4	26.9	29.0	STp-09x028-1,2	4002895	90.0	STp-13x028-1,2	4002916 *	62.4
1 1/4	1 3/8	35.0	1	33.7	36.0	STp-09x035-1,2	4002896	69.6	STp-13x035-1,2	4002917 *	50.4
1 1/2	1 5/8	42.0	1 1/4	42.4	43.5	STp-09x042-1,2	4002897 *	57.6	STp-13x042-1,2	4002918 *	42.0
			1 1/2	48.3	49.5	STp-09x048-1,2	4002898 *	50.4	STp-13x048-1,2	4002919 *	38.4
2	2 1/8	54.0		54.0	55.0	STp-09x054-1,2	4002899 *	45.6	STp-13x054-1,2	4002920 *	36.0
			2	60.3	61.5	STp-09x060-1,2	4002900 *	43.2	STp-13x060-1,2	4002921 *	28.8
2 13/16	3	76.1	2 1/2	76.1	77.0				STp-13x076-1,2	4002923 *	27.6
			3	88.9	90.5				STp-13x089-1,2	4002924 *	24.0

Copper pipe Cu			Iron & steel pipe Fe			19 mm Insulation thickness			25 mm Insulation thickness		
NB inch	Nom OD inch	Nom OD mm	NB inch	Nom OD mm	Min ID mm	Reference	Order No.	m/ carton	Reference	Order No.	m/ carton
1/2	5/8	15.0			16.0	STp-19x015-1,2	4002933	67.2			
3/4	7/8	22.0	1/2	21.3	23.0	STp-19x022-1,2	4002935	49.2	STp-25x022-1,2	4002951	30.0
1	1 1/8	28.0	3/4	26.9	29.0	STp-19x028-1,2	4002936	39.6	STp-25x028-1,2	4002952	24.0
1 1/4	1 3/8	35.0	1	33.7	36.0	STp-19x035-1,2	4002937	34.8	STp-25x035-1,2	4002953	21.6
1 1/2	1 5/8	42.0	1 1/4	42.4	43.5	STp-19x042-1,2	4002938	28.8	STp-25x042-1,2	4002954	19.2
			1 1/2	48.3	49.5	STp-19x048-1,2	4002939 *	27.6	STp-25x048-1,2	4002955 *	16.8
2	2 1/8	54.0		54.0	55.0	STp-19x054-1,2	4002940 *	21.6	STp-25x054-1,2	4002956 *	16.8
			2	60.3	61.5	STp-19x060-1,2	4002941 *	21.6	STp-25x060-1,2	4002957 *	15.6
2 13/16	3	76.1	2 1/2	76.1	77.0	STp-19x076-1,2	4002943 *	16.8	STp-25x076-1,2	4002959 *	12.0
			3	88.9	90.5	STp-19x089-1,2	4002944 *	16.8	STp-25x089-1,2	4002960 *	9.6

* No stock item, delivery time on request.

For further dimensions please contact our customer service.

Kaiflex ST_{plus} SK Tube · self-adhesive · with tangential cut



Colour: Black · Length: 1.2 m

Copper pipe Cu			Iron & steel pipe Fe			9 mm Insulation thickness			13 mm Insulation thickness		
NB inch	Nom OD inch	Nom OD mm	NB inch	Nom OD mm	Min ID mm	Reference	Order No.	m/ carton	Reference	Order No.	m/ carton
1/2	5/8	15.0			16.0	STp-09x015-1,2-SK	4003002 *	158.4	STp-13x015-1,2-SK	4003004 *	108.0
3/4	7/8	22.0	1/2	21.3	23.0	STp-09x022-1,2-SK	4003003 *	112.8	STp-13x022-1,2-SK	4003005 *	80.4
1	1 1/8	28.0	3/4	26.9	29.0	STp-09x028-1,2-SK	4006747 *	90.0	STp-13x028-1,2-SK	4003006 *	62.4
1 1/4	1 3/8	35.0	1	33.7	36.0	STp-09x035-1,2-SK	4005862 *	69.6	STp-13x035-1,2-SK	4005864 *	50.4
1 1/2	1 5/8	42.0	1 1/4	42.4	43.5	STp-09x042-1,2-SK	4006748 *	57.6	STp-13x042-1,2-SK	4005865 *	42.0
			1 1/2	48.3	49.5	STp-09x048-1,2-SK	4009480 *	50.4	STp-13x048-1,2-SK	4005866 *	38.4
2	2 1/8	54.0		54.0	55.0	STp-09x054-1,2-SK	4006749 *	45.6	STp-13x054-1,2-SK	4005867 *	36.0
			2	60.3	61.5	STp-09x060-1,2-SK	4005863 *	43.2	STp-13x060-1,2-SK	4005868 *	28.8
2 13/16	3	76.1	2 1/2	76.1	77.0				STp-13x076-1,2-SK	4005869 *	27.6
			3	88.9	90.5				STp-13x089-1,2-SK	4012822 *	24.0

Copper pipe Cu			Iron & steel pipe Fe			19 mm Insulation thickness			25 mm Insulation thickness		
NB inch	Nom OD inch	Nom OD mm	NB inch	Nom OD mm	Min ID mm	Reference	Order No.	m/ carton	Reference	Order No.	m/ carton
1/2	5/8	15.0			16.0	STp-19x015-1,2-SK	4006752 *	67.2			
3/4	7/8	22.0	1/2	21.3	23.0	STp-19x022-1,2-SK	4005870 *	49.2	STp-25x022-1,2-SK	4012825 *	30.0
1	1 1/8	28.0	3/4	26.9	29.0	STp-19x028-1,2-SK	4003007 *	39.6	STp-25x028-1,2-SK	4012826 *	24.0
1 1/4	1 3/8	35.0	1	33.7	36.0	STp-19x035-1,2-SK	4010417 *	34.8	STp-25x035-1,2-SK	4012827 *	21.6
1 1/2	1 5/8	42.0	1 1/4	42.4	43.5	STp-19x042-1,2-SK	4010717 *	28.8	STp-25x042-1,2-SK	4012828 *	19.2
			1 1/2	48.3	49.5	STp-19x048-1,2-SK	4012823 *	27.6	STp-25x048-1,2-SK	4012829 *	16.8
2	2 1/8	54.0		54.0	55.0	STp-19x054-1,2-SK	4010871 *	21.6	STp-25x054-1,2-SK	4012830 *	16.8
			2	60.3	61.5	STp-19x060-1,2-SK	4012824 *	21.6	STp-25x060-1,2-SK	4012831 *	15.6
2 13/16	3	76.1	2 1/2	76.1	77.0	STp-19x076-1,2-SK	4010872 *	16.8	STp-25x076-1,2-SK	4012832 *	12.0
			3	88.9	90.5	STp-19x089-1,2-SK	4010873 *	16.8	STp-25x089-1,2-SK	4012833 *	9.6

* No stock item, delivery time on request.

For further dimensions please contact our customer service.

Kaifix ECplus Easy Connect · self-adhesive R-FORCE disks · for Kaiflex STplus tubes



Colour: Black

Copper pipe Cu			Iron & steel pipe Fe			9 mm Insulation thickness			13 mm Insulation thickness		
NB inch	Nom OD inch	Nom OD mm	NB inch	Nom OD mm	Min ID mm	Reference	Order No.	pcs/ carton	Reference	Order No.	pcs/ carton
1/2	5/8	15.0			16.0	EC+ns-09x015	4005018	132	EC+ns-13x015	4005039	90
3/4	7/8	22.0	1/2	21.3	23.0	EC+ns-09x022	4005020	94	EC+ns-13x022	4005041	72
1	1 1/8	28.0	3/4	26.9	29.0	EC+ns-09x028	4005021	75	EC+ns-13x028	4005042	52
1 1/4	1 3/8	35.0	1	33.7	36.0	EC+ns-09x035	4005022	58	EC+ns-13x035	4005043	42
1 1/2	1 5/8	42.0	1 1/4	42.4	43.5	EC+ns-09x042	4005023	48	EC+ns-13x042	4005044	35
			1 1/2	48.3	49.5	EC+ns-09x048	4005024	42	EC+ns-13x048	4005045	32
2	2 1/8	54.0		54.0	55.0	EC+ns-09x054	4005025	38	EC+ns-13x054	4005046	30
			2	60.3	61.5	EC+ns-09x060	4005026	36	EC+ns-13x060	4005047	24
2 13/16	3	76.1	2 1/2	76.1	77.0	EC+ns-09x076	4005028	30	EC+ns-13x076	4005049	23
			3	88.9	90.5	EC+ns-09x089	4005029	24	EC+ns-13x089	4005050	20

Copper pipe Cu			Iron & steel pipe Fe			19 mm Insulation thickness			25 mm Insulation thickness		
NB inch	Nom OD inch	Nom OD mm	NB inch	Nom OD mm	Min ID mm	Reference	Order No.	pcs/ carton	Reference	Order No.	pcs/ carton
1/2	5/8	15.0			16.0	EC+ns-19x015	4005059	56			
3/4	7/8	22.0	1/2	21.3	23.0	EC+ns-19x022	4005061	43	EC+ns-25x022	4005079	25
1	1 1/8	28.0	3/4	26.9	29.0	EC+ns-19x028	4005062	33	EC+ns-25x028	4005080	23
1 1/4	1 3/8	35.0	1	33.7	36.0	EC+ns-19x035	4005063	29	EC+ns-25x035	4005081	20
1 1/2	1 5/8	42.0	1 1/4	42.4	43.5	EC+ns-19x042	4005064	24	EC+ns-25x042	4005082	16
			1 1/2	48.3	49.5	EC+ns-19x048	4005065	23	EC+ns-25x048	4005083	14
2	2 1/8	54.0		54.0	55.0	EC+ns-19x054	4005066	18	EC+ns-25x054	4005084	14
			2	60.3	61.5	EC+ns-19x060	4005067	18	EC+ns-25x060	4005085	13
2 13/16	3	76.1	2 1/2	76.1	77.0	EC+ns-19x076	4005069	14	EC+ns-25x076	4005087	10
			3	88.9	90.5	EC+ns-19x089	4005070	14	EC+ns-25x089	4005088	8

For further dimensions please contact our customer service.

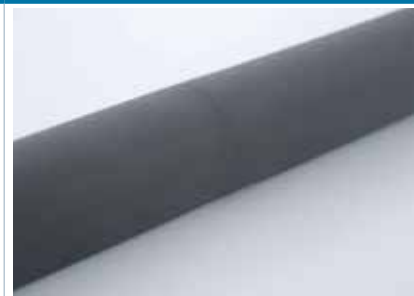
Kaifix ECplus Application guide



Remove foil.



Apply on one end.



Stick together.

